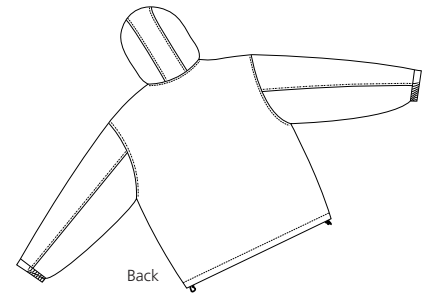
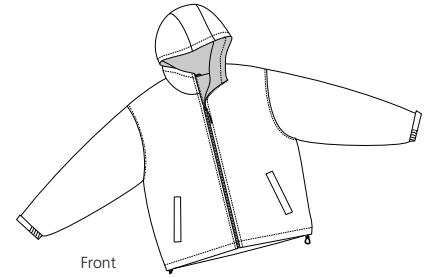


# Youth Team Jacket

**Sport-Tek™**  
By Port Authority®



## YJP56

- \* 100% Taslan nylon shell \* Water repellent \* Sweatshirt fleece lining on body and hood
- \* Open bottom hem with drawcord and toggle \* Elastic cuffs with adjustable Velcro strap
- \* Locker loop \* Slash pockets \* Inside chest pocket with Velcro closure
- \* No drawstring at hood

### Care Instructions:

Machine wash cold, gentle cycle.  
Tumble dry low. Cool iron if needed. Do not bleach

### Finished Measurements in Inches

Size	XS	S	M	L	XL
Length	18	20.5	23	25.5	28
Chest	17	18	19.5	21	22.5
Sleeve	21	24	27	30	33
Areas for Decoration	L/R Chest, Full Back		Port Pocket™	NA	

Chest width 1" below arm hole, Body length from back neck seam to hem,  
Sleeve length from center back seam to hem

### Colors

	Black/Light Oxford
	Bright Navy/Light Oxford
	Hunter/Light Oxford
	Maroon/Light Oxford
	Red/Light Oxford
	Royal/Light Oxford

### Please Note:

Colors shown are approximate and for reference only. For closest match see PMS colors, or for exact match, returnable samples and grommated samples are available.

### Color Chart

Colors	Black	Bright Navy	Hunter	Maroon	Red	Royal
Textile PMS	19-4005TC	19-3921TC	19-5212TC	19-1522TC	19-1664TC	19-3964TC
General PMS	426C	533C	5467C	504C	187C	661C